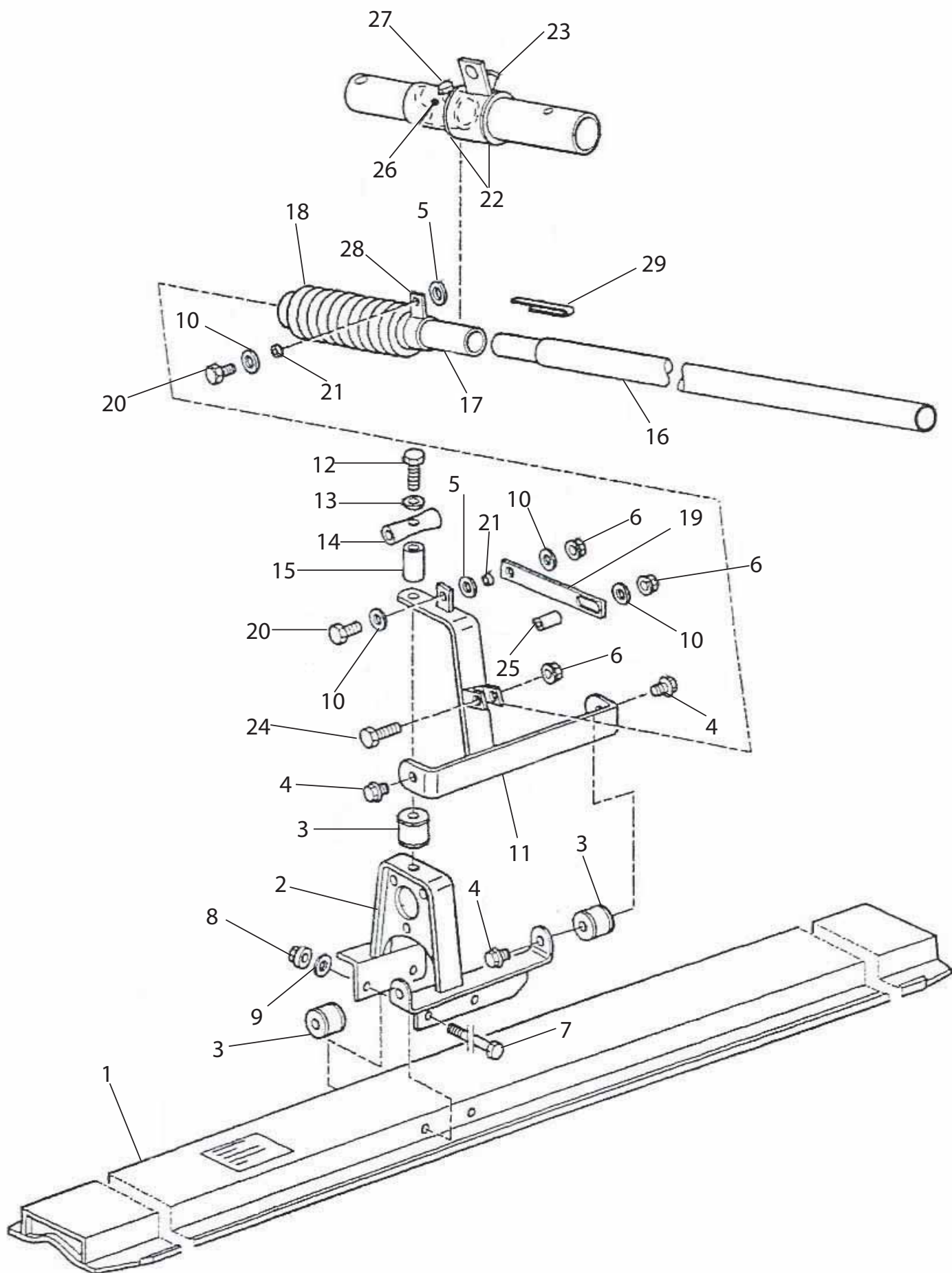
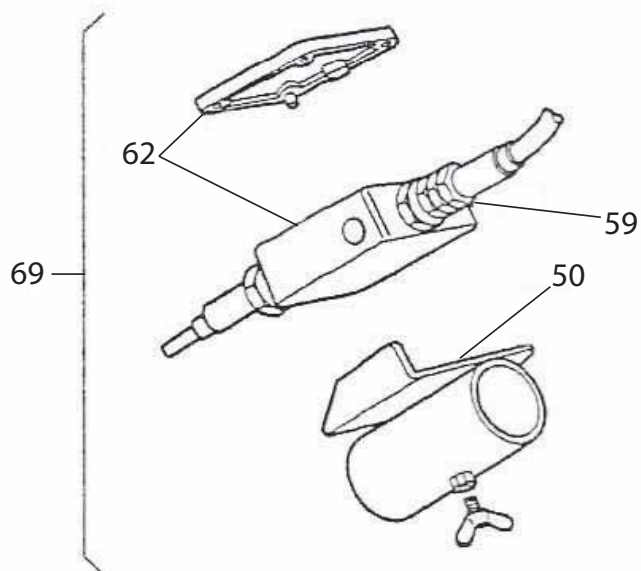
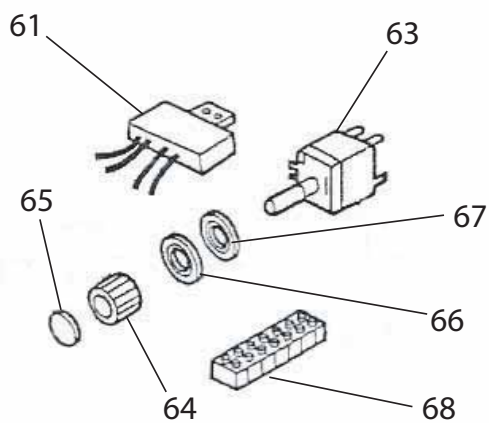
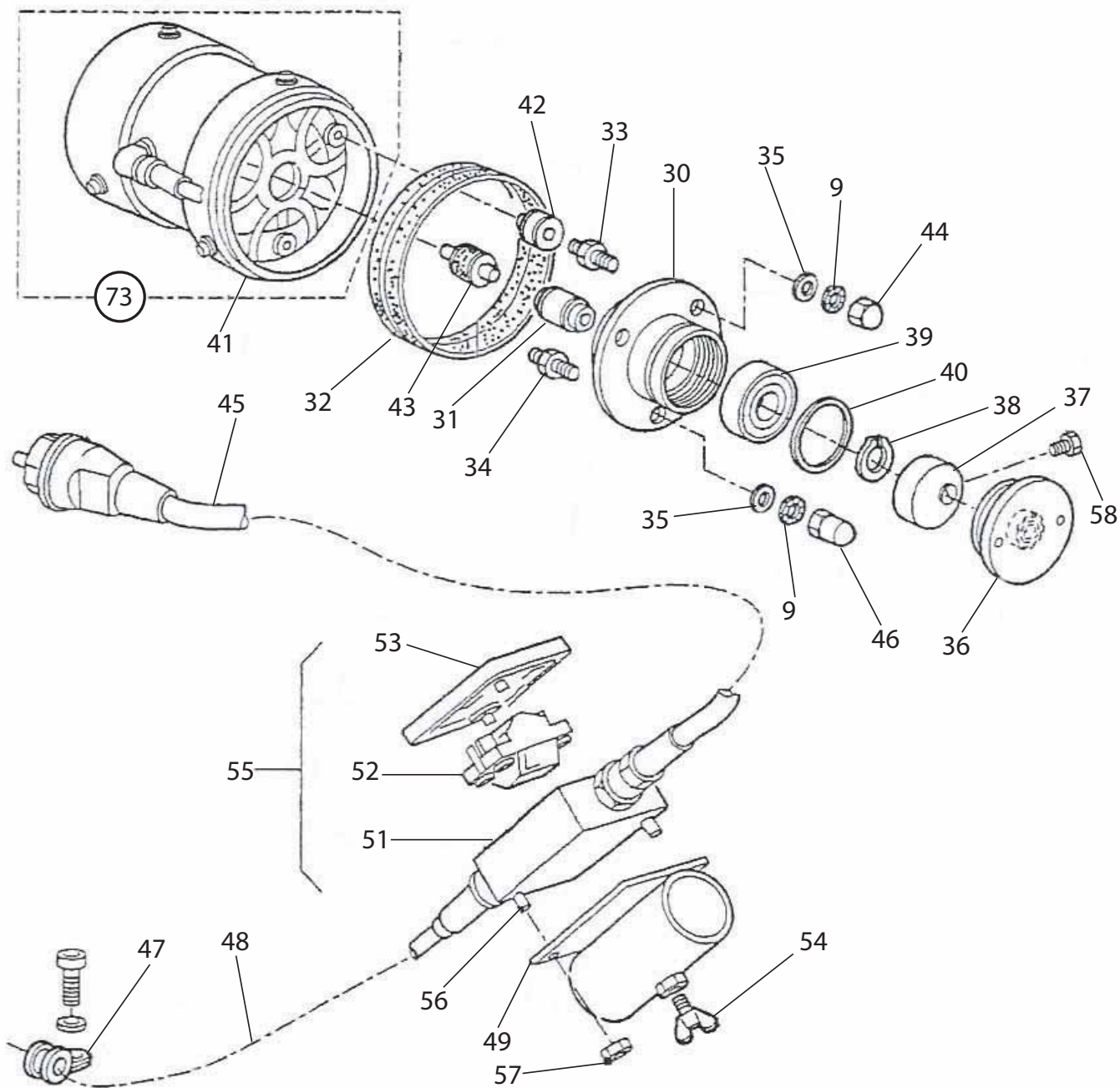


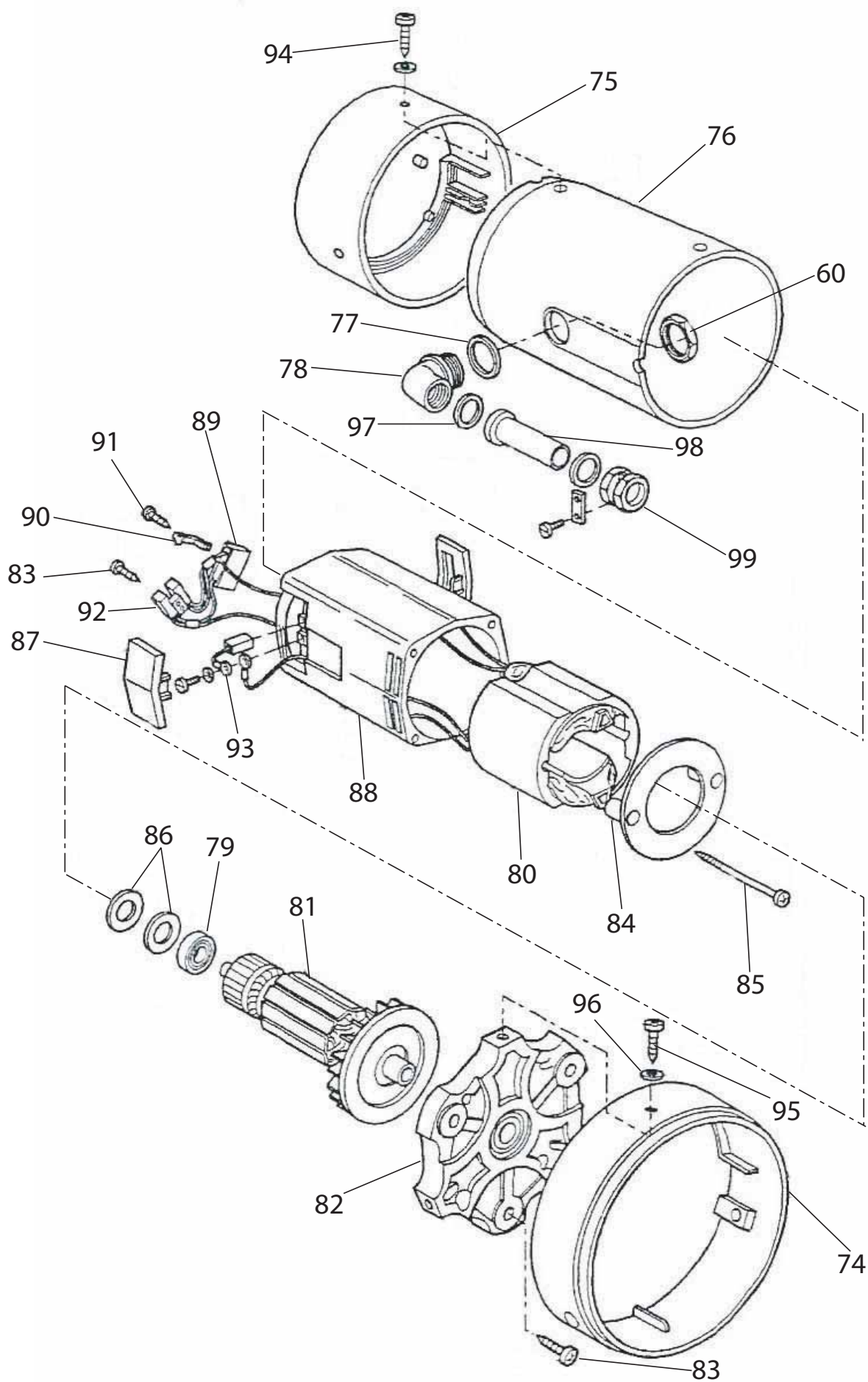
Easy Screed 200 - Electric



Easy Screed 200 - Electric



Easy Screed 200 - Electric



Easy Screed 200 - Electric

ITEM NUMBER ⁽¹⁾	PART NUMBER ⁽²⁾	DESCRIPTION ⁽³⁾	QTY ⁽⁴⁾	ITEM NUMBER ⁽¹⁾	PART NUMBER ⁽²⁾	DESCRIPTION ⁽³⁾	QTY ⁽⁴⁾
1	157.0.295	BEAM 1M	1	48	157.0.346	CABLE	1
	157.0.296	BEAM 1.5M	1	49	157.0.347	SWITCH ASSY BRACKET (E)	1
	157.0.297	BEAM 2M	1	50	157.0.348	SWITCH ASSY BRACKET (ESC)	1
	157.0.298	BEAM 2.5M	1	51	157.0.349	SWITCH HOUSING	1
2	157.0.299	MOTOR ASSY BRACKET	1	52	157.0.350	ROCKER SWITCH	1
3	157.0.300	RUBBER BUFFER	2	53	157.0.351	SWITCH COVER	1
4	157.0.301	BOLT M8 x 10	5	54	157.0.352	WING SCREW	1
5	157.0.302	UNDULATED RING	2	55	157.0.353	SWITCH COMPLETE	1
6	157.0.303	NUT M10	3	56	157.0.354	SCREW	2
7	157.0.304	BOLT M8 x 150	2	57	157.0.355	SELF LOCKING NUT	2
8	157.0.305	NUT M8	2	58	157.0.356	SCREW	1
9	157.0.306	RETAINING RING	2	59	157.0.357	PACKING BOX	1
10	157.0.307	WASHER M10	4	61	157.0.359	SPEED REGULATOR	1
11	157.0.308	ASSEMBLY BRACKET	1	62	157.0.360	SWITCH BOX	1
12	157.0.309	BOLT	1	63	157.0.361	POTENTIOMETER & SWITCH	1
13	157.0.310	RETAINING RING	1	64	157.0.362	KNOB (POTENTIOMETER)	1
14	157.0.311	GRIP	1	65	157.0.363	KNOB CAP	1
15	157.0.312	SPACER	1	66	157.0.364	FIGURE DIAL	1
16	157.0.313	OPERATING HANDLE 150cm	3	67	157.0.365	STATOR	1
17	157.0.314	PITCH CONTROL	1	68	157.0.366	TERMINAL BLOC	1
18	157.0.315	RUBBER SLEEVE	1	69	157.0.367	SPEED REGULATOR + BRACKET	1
19	157.0.316	ADJUSTABLE STRIP	1	73	157.0.375	DRIVE UNIT	1
20	157.0.317	BOLT M10 x 25	2	74	157.0.376	VENTILATION RING (SMALL)	1
21	157.0.318	SPACER 4.2mm	2	75	157.0.377	VENTILATION RING (LARGE)	1
22	157.0.319	LOCK-RING	2	76	157.0.378	VENTILATION HOUSING	1
23	157.0.320	LUBRICATING NIPPLE & CAP	1	77	157.0.379	RUBBER RING	1
24	157.0.321	BOLT M10 x 50	1	78	157.0.380	PACKING BOX	1
25	157.0.322	SPACER 32mm	1	79	157.0.381	REAR BEARING	1
26	157.0.323	BRASS NUT M8	1	80	157.0.382	STATOR 220V	1
27	157.0.324	BOLT M8	1	81	157.0.383	ROTOR	1
28	157.0.325	PLASTIC CLAMP	1	82	157.0.384	FRONT SHEILD	1
29	157.0.326	LOCKING CLIP	1	83	157.0.385	SELF TAPPING SCREW	5
30	157.0.327	EXCENTER HOUSING	1	84	157.0.386	VENTILATOR COVER	1
31	157.0.328	EXCENTER SHAFT	1	85	157.0.387	SCREW	2
32	157.0.329	RUBBER SEAL	1	86	157.0.388	RUBBER BEARING RING	1
33	157.0.330	ADAPTER BOLT (SHORT)	2	87	157.0.389	BRUCH COVER	2
34	157.0.331	ADAPTER BOLT (LARGE)	1	88	157.0.390	MOTOR HOUSING	1
35	157.0.332	WASHER	3	89	157.0.391	CAPACITOR	1
36	157.0.333	COVER & BEARING	1	90	157.0.392	CAPACITOR CLAMP	1
37	157.0.334	EXCENTER 1.0 - 1.5m	1	91	157.0.393	SELF TAPPING SCREW	3
	157.0.335	EXCENTER 2.0 - 2.5m	1	92	157.0.394	TERMINAL BLOC	1
38	157.0.336	LOCK RING	1	93	157.0.395	SET OF BRUSHES	1
39	157.0.337	EXCENTER BEARING	1	94	157.0.396	SELF TAPPING SCREW	3
40	157.0.338	O RING	1	95	157.0.397	SELF TAPPING SCREW	3
41	157.0.339	DRIVE UNIT	1	96	157.0.398	WASHER	3
42	157.0.340	RUBBER BUFFER	3	97	157.0.399	PRESSING RING	2
43	157.0.341	COUPLING RUBBER	1	98	157.0.400	CABLE SLEEVE	1
44	157.0.342	CAP NUT	3	99	157.0.401	CABLE PACKING BOX	1
45	157.0.343	CABLE 2 x 2.5mm & 230v PLUG	2				
46	157.0.344	CAP NUT (HIGH)	10				
47	157.0.345	CABLE CLAMP	1				
				NOT SHOWN			
				-	157.0.358	NUT	2
				-	157.0.373	TRUMPET PACKING BOX PG13	1
				-	157.0.374	INSULATION PLATE	1

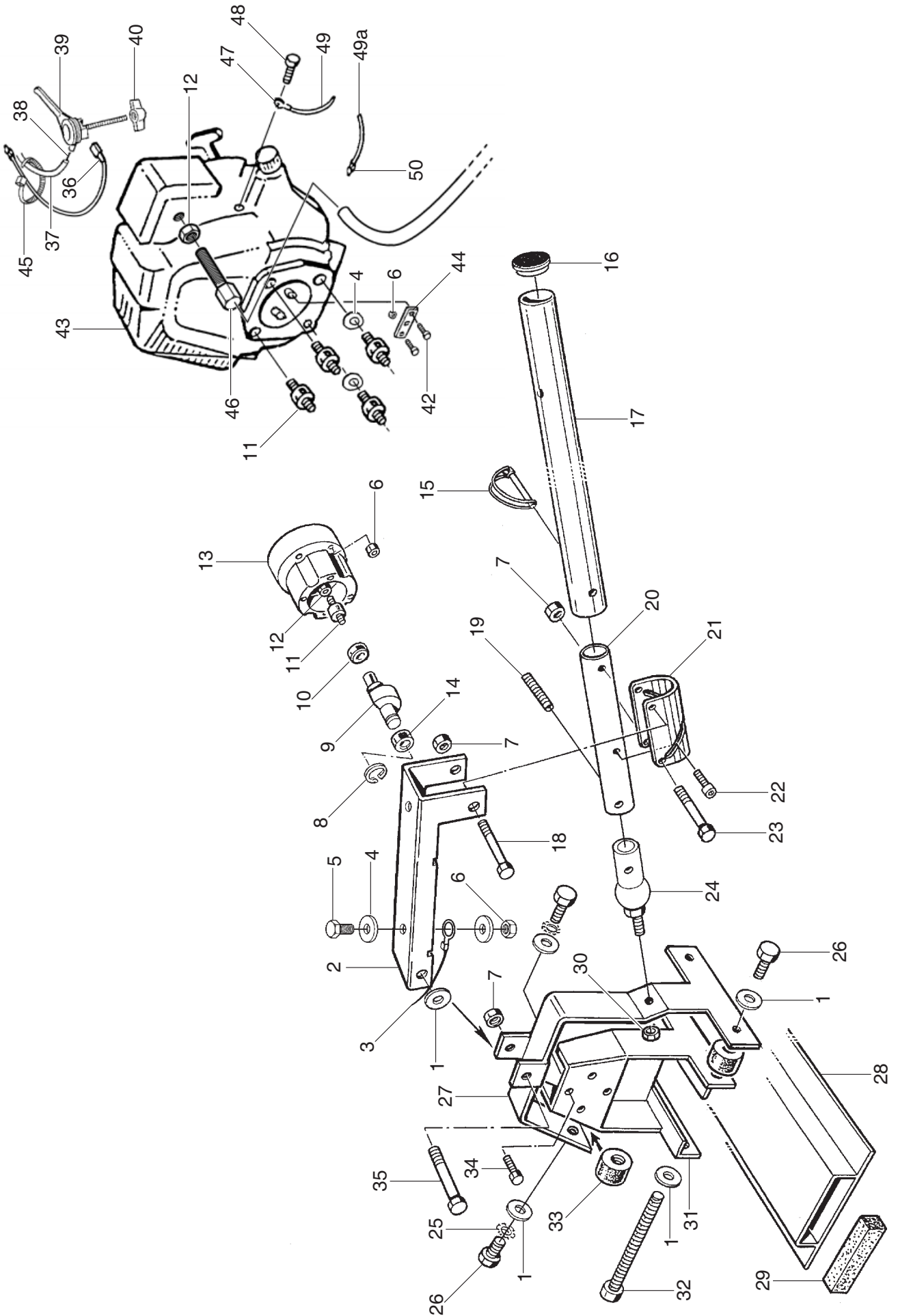
(1) **Item Number** / numéro sur le schéma / número de la ilustración / número da ilustração / afbeeldingsnummer / tegningsnummeret / Teil-Nummer / numero dell'illustrazione

(2) **Part Number** / Numéro de référence de la pièce / número de pieza / número da parte / stuknummer / Styknummer / Nummer auf der Abbildung / numero di parte



(3) **Description** / Désignation / Descripción / Descrição / Omschrijving / Beskrivelse / Bezeichnung / Descrizione

(4) **Quantity** / Quantité / Cantidad / Quantidade / Hoeveelheid / Mængde / Quantität / Quantità

Easy Screed 200 - Honda (Up To Serial Number 12.000)



Easy Screed 200 - Honda (Up To Serial Number 12.000)

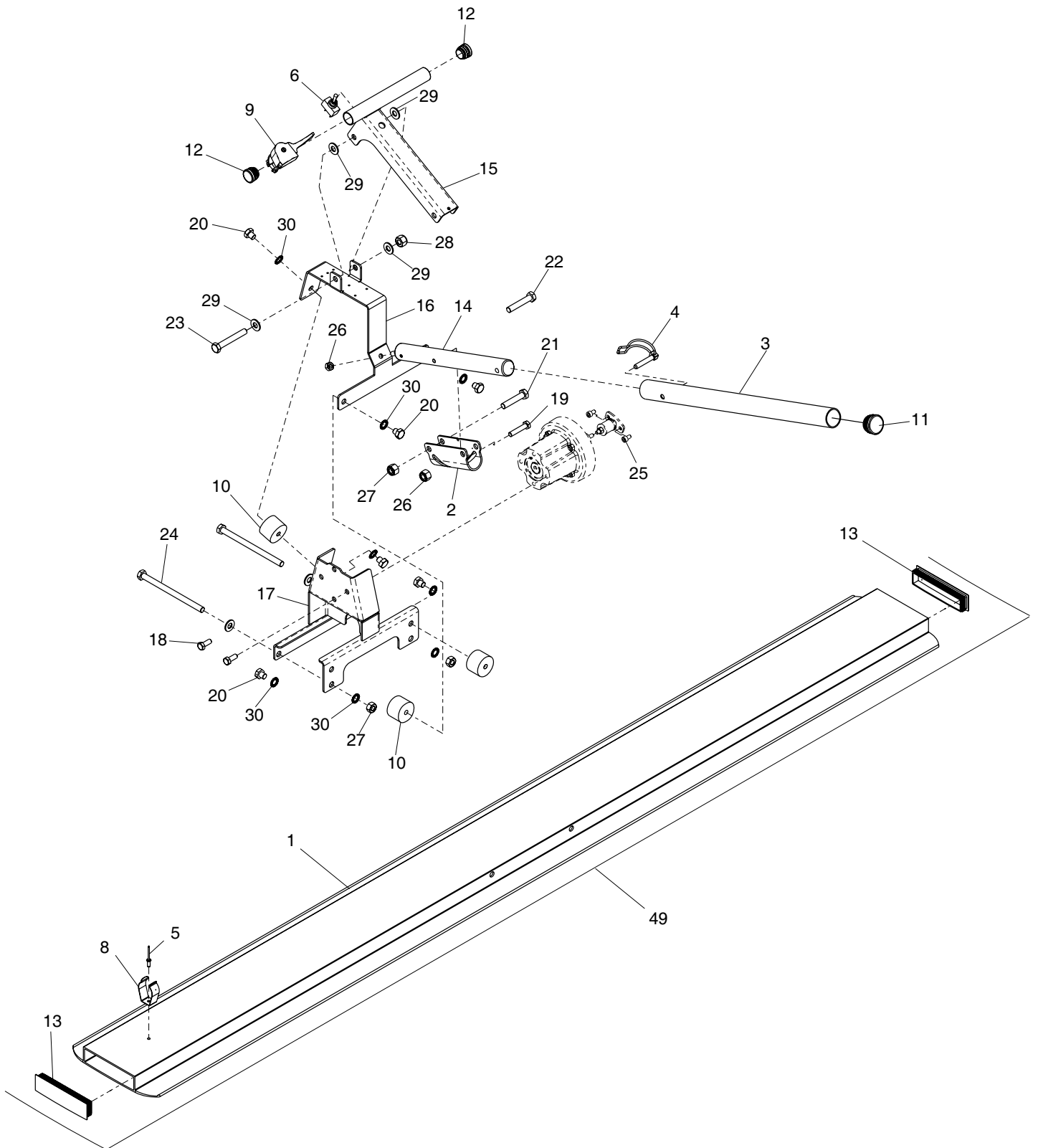
ITEM NUMBER	PART NUMBER	DESCRIPTION
1	157.0.244	WASHER
2	157.0.245	BRACKET
3	157.0.246	EARTH CABLE
4	157.0.247	WASHER
5	157.0.248	SCREW
6	157.0.249	NUT
7	157.0.250	NUT
8	157.0.251	WASHER
9	157.0.252	ECCENTRIC SHAFT
10	157.0.253	BEARING
11	157.0.254	AV MOUNT
12	157.0.255	NUT
13	157.0.256	DRIVE COUPLING
14	157.0.257	BEARING
15	157.0.258	LYNCH PIN
16	157.0.259	CAP
17	157.0.260	OPERATING HANDLE
18	157.0.261	SCREW
19	157.0.262	PIN
20	157.0.263	TUBE
21	157.0.264	PRESSING
22	157.0.265	SCREW
23	157.0.266	SCREW
24	 51	CONNECTOR
25	157.0.268	WASHER
26	157.0.269	SCREW
27	157.0.270	ASSEMBLY BRACKET
28	157.0.272	BLADE (2 METRE)
29	157.0.273	INSERT
30	157.0.274	NUT
31	157.0.275	POWER UNIT MOUNTING BRACKET
32	157.0.276	SCREW
33	157.0.277	BUFFER
34	157.0.278	SCREW
35	157.0.279	SCREW
36	157.0.280	TERMINAL
37	 38	THROTTLE CABLE (1.75 METRE)
38	157.0.282	THROTTLE CABLE
39	157.0.283	THROTTLE LEVER
40	157.0.284	NUT
42	157.0.286	SCREW
43	157.0.287	ENGINE - HONDA GX22
44	157.0.288	PLATE
45	157.0.289	CABLE TIE
46	157.0.290	ADAPTOR
47	157.0.291	TERMINAL
48	157.0.292	SCREW
49	157.0.293	CABLE (1.75 METRE)
50	157.0.294	TERMINAL
51	157.0.511	CONNECTOR KIT (NOT SHOWN)

(1) **Item Number** / numéro sur le schéma / número de la ilustración / número da ilustração / afbeeldingsnummer / tegningsnummeret / Teil-Nummer / numero dell'illustrazione

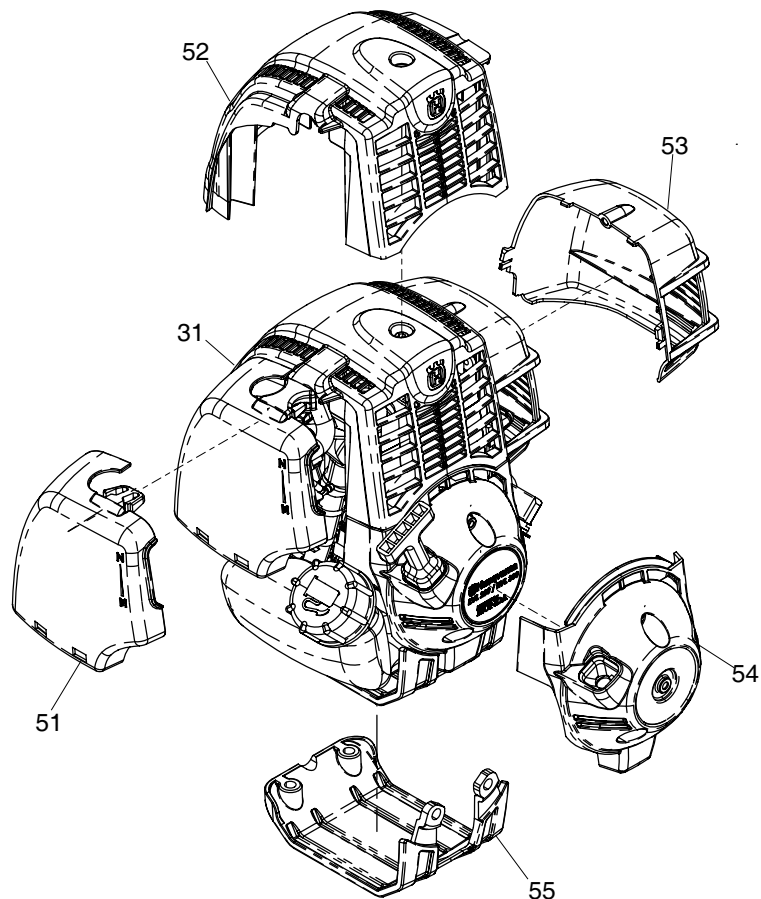
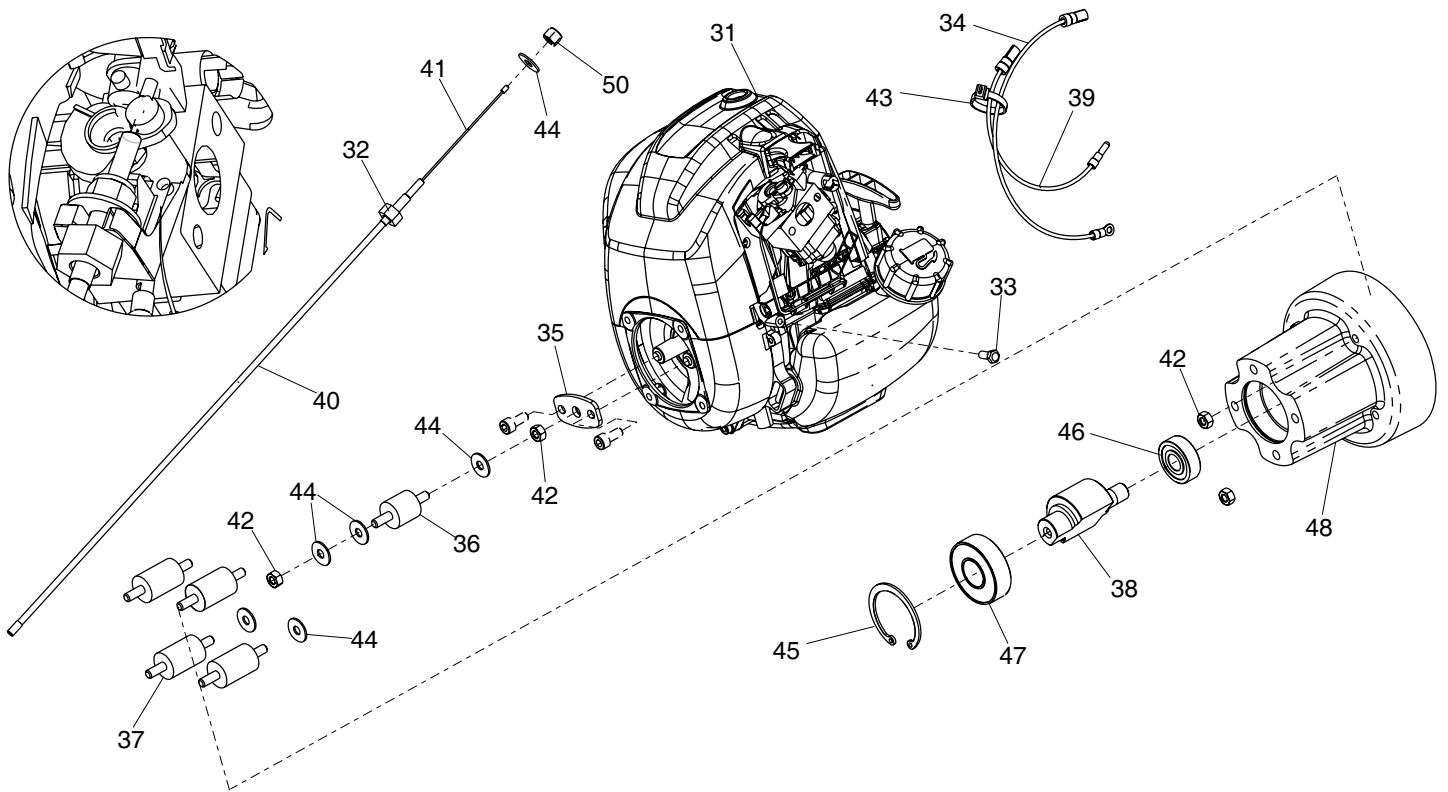
(2) **Part Number** / Numéro de référence de la pièce / número de pieza / número da parte / stuknummer / Styknummer / Nummer auf der Abbildung / numero di parte

(3) **Description** / Désignation / Descripción / Descrição / Omschrijving / Beskrivelse / Bezeichnung / Descrizione

Easy Screenshot 200 - Honda (From Serial Number 12.000)



Easy Screenshot 200 - Honda (From Serial Number 12.000)



Easy Screed 200 - Honda (From Serial Number 12.000)

ITEM (1) NUMBER	PART (2) NUMBER	DESCRIPTION (3)	QTY (4)	ITEM (1) NUMBER	PART (2) NUMBER	DESCRIPTION (3)	QTY (4)
1	157.0.485	Spare Beam 2M, With Handle	1	31	20/0097	Engine GX25 Honda EU	1
2	157.0.264	U, Outside	1	32	157.0.482	Adjusting Screw	1
3	157.0.260	Handle	1	33	157.0.483	Screw Hex 5x12	1
4	157.0.258	Pin Clip D/8 Lg 45	1	34	157.0.484	Wire Length 240mm	1
5	157.0.486	Rivet, Stainless 4.8 X 9	2	35	157.0.288	Plate	1
6	157.0.487	Switch	1	36	157.0.254	Rubber Silent Block 20 X 20	1
8	157.0.489	Spring Collar	2	37	157.0.494	Vibration Damper 20x30 GM 6x15	4
9	157.0.490	Lever 17270 D25	1	38	157.0.495	Vibrating Axle GX25	1
10	157.0.277	Rubber Silent Block 40 X 28	2	39	157.0.496	Wire Length 160mm	1
11	157.0.259	Feet Pad D35	1	40	157.0.497	Wire Sleeve 400mm	1
12	157.0.491	Pad D25	2	41	157.0.498	Inner Cable Length 500 MM	1
13	157.0.273	Rubber Block 125/30/30	2	42	8/6001	Nut, M6	2
14	157.0.492	Arm - Drilling	1	43	157.0.289	Cable Tie	
15	157.0.499	Handle Carry	1	44	157.0.506	Washer, Large M6	5
16	157.0.500	Stirrup	1	45	157.0.251	Circlips For Bore Ø47	1
17	157.0.501	Motor Support	1	46	157.0.508	Ball Bearings 6201 2 RS	1
18	157.0.502	Screw Hex 8x20-FT	4	47	157.0.509	Ball Bearings 6204 2 RS	1
19	7/8047	Screw Hex 8x40	1	48	157.0.493	Machined Block	1
20	157.0.503	Screw Hex 10x10-FT	3	49	157.0.510	Beam Assembly	1
21	157.0.266	Screw Hex 10x50	1	50	8/6007	Nut Nylock M6	1
22	157.0.261	Screw Hex 10x55	1	51	157.0.512	Engine Side Cover 1	1
23	157.0.504	Screw Hex 10x70	1	52	157.0.513	Engine Top Cover	1
24	157.0.505	Screw Hex 10x150	2	53	157.0.514	Engine Side Cover 2	1
25	157.0.286	Screw Inhex 6x10	2	54	157.0.515	Engine Front Cover	1
26	8/8001	Nut, M8	1	55	157.0.516	Engine Bottom Cover	1
27	8/10003	Nut, M10	3				
28	157.0.250	Nut, Nylock M10	1				
29	157.0.507	Washer M10	2				
30	157.0.268	Washer, Lock M10	8				
				NOT SHOWN			
				-	157.0.488	Black Cap For Switch U 851	1